



ZHEJIANG HANGCHA IMP. & EXP. CO., LTD.

Factory site: 666 Xiangfu Road,  
Hangzhou, Zhejiang, China (311305)

Tel: +86-571-88926735 88926755  
Fax: +86-571-88926789 88132890

sales@hcforklift.com  
www.hcforklift.com



Follow us on  
Facebook



Follow us on  
YouTube



Follow us on  
WeChat



Download "Hangcha  
Forklift" App



ISO14001  
ISO14001:2015



ISO9001  
ISO9001:2015



HANGCHA trucks conform  
to the European Safety  
Requirements.

2021 VERSION 1 / COPYRIGHT 2021/04

HANGCHA GROUP CO., LTD. reserves the right to make any changes without notice concerning colors, equipment, or specifications detailed in this brochure, or to discontinue individual models. The colors of trucks, delivered may differ slightly from those in brochures.

# XF2 Series IC Counterbalanced Trucks

with capacity of 2,000 to 3,500kg



*The World of Hangcha*  
SINCE 1956





# FOR HIGH PERFORMANCE DURING WORKING



## Appearance

A vivid and sturdy exterior inheriting the classic design, embodying innovative ideas, and bringing a strong high-tech impact.



## Safe

/ The vehicle has a low center of gravity design and optimized operating vision. (small counterweight design, backward tilting counterweight design, optimized triplex mast design).

/ DPS system is provided for the standard configuration and optionally an adjustable speed limit range of several segments is provided.



## Mast

Can be easily installed with J-hooks through a simple process.







***MORE VISION  
MORE CONTROL  
MORE GUARANTEE***

**All-round visibility**

Optimized design provides outstanding visibility in all directions.



# COMFORTABLE

- / The fully-suspended gearbox, fully-suspended overhead guard, and fully-suspended seat realize three-stage vibration reduction to reduce vibration of the vehicle.
- / Noise control: Special sound-absorbing cotton is attached to certain parts and so on to decrease the vehicle's noise.
- / Optimized ergonomic design, enlarged cab space, an optional new-generation fingertip operating system.



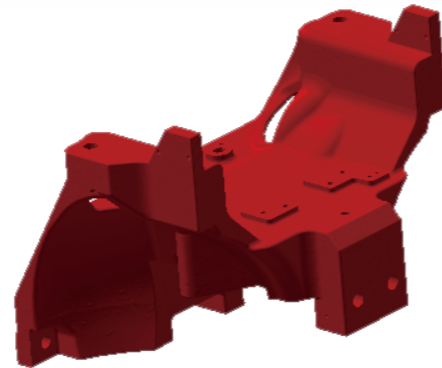
The fully-suspended gearbox



Fully-suspended overhead guard

## Truck Construction

With the novel designed cast steering axle mounts, the center of gravity is lowered, and the vehicle's noise radiation is reduced. An integrated fully-suspended overhead guard is provided for the standard configuration, and customers can choose cab. Large plate stamping and molding processes and automatic welding technology are used to enable a stylish exterior.



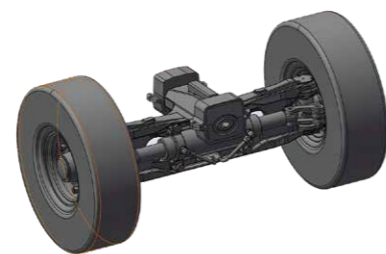
Cast steering axle mounts

## Control system

- / Breaking through the limitation of the traditional steering axle structure, the newly developed cast open steering axle has the maximum internal turning angle increased from 77° to 82°, it can help customers work in narrow space.
- / With the cast open steering axle, the oil cylinder can be replaced easily, and the vehicle has a low center of gravity and good stability.
- / The steering axle is installed with pads, which effectively improve the operation comfort and reliability.
- / Parking brake: A central brake requiring less operating force.



An optional pedal parking brake



Cast steering axle

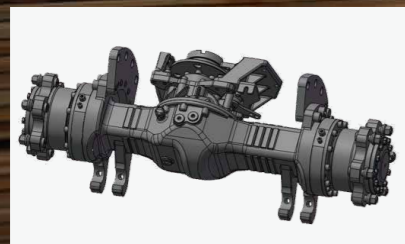




# THE POWER TO PERFORM

## Reliable

- / A wet axle is developed and used to significantly improve the reliability of the braking system and force transmission structural parts. (Wet brake, custom high-strength bolts, wheel side planetary reducer).
- / Wet brake drive axle + enhanced SHAOCHI/OKAMURA enhanced gearbox. Both the drive axle and the gearbox are expected to have a service life of far longer than 10 years, and the wet brake 10 years. Enhanced four-piece rims are used.



Wet brake drive axle

## Hydraulic

A high-pressure hydraulic system and load-sensing steering-priority-ensured multiway valves are used to improve system efficiency. A low-noise Shimadzu gear pump can improve reliability and reduce noise. All joints are 24° conic joints and each high-pressure pipe joint has a pressure measuring port, to enable better sealing and maintainability.



**E SERIES** engines and an enhanced gearbox are developed and used to significantly improve the reliability of the power train. (E series engines match the enhanced F gearbox and new Okamura gearbox).



High Power



Heat Dissipation

## Power

- / The highly cost-effective Xinchai 3E22 diesel engine meets EU V emission requirements.
- / The engine has been tested for 10000h in total for reliability validation in several round, the reliability has been fully verified. It is worth mentioning that the diesel engine has been tested in Jinan testing center and Bosch Wuxi test bench for 3000h. The diesel engine has excellent reliability, and is rated as Bosch off-road project 'BES' award.
- / A plate-fin heat dissipater with less air resistance is developed, which has a heat dissipation efficiency increased by 15%.



0.44%

Very low dilution ratio of engine oil, the oil dilution ratio after single regeneration is only 0.44%, much lower than the value of 20% specified in the national standard, the oil change interval of E series diesel engine up to 500h.



5,000h

DPF has a long maintenance interval. Based on excellent engine raw emission level and regeneration strategy, the ash cleaning interval up to 5000h.



DPF



E series engine



# FULLY AUTOMATED

## Electrical system

- / Streamer LED taillights are developed and used to make the vehicle more ethereal with a strong high-tech impact.
- / The new-generation high-efficiency energy-saving novel combination LED lighting system is energy-saving, while the performance and service life of the lights are significantly improved.
- / In order to improve the protection level, all key connectors and connectors are all waterproof.



Streamer LED taillights

## Intelligent

- / Interactive instruments are provided for the standard configuration, to display the operating status of the vehicle, and realize the information interaction of the vehicle.
- / An intelligent controller can realize the functions of OPS system, and flameout for idle speed time out, and can have other optional functions of speed control, speed limiting for faults, lifting at a high idle speed, automatic fork leveling, etc.



New interactive instruments





## Standards

Truck	Transmission	Steering	Power	Body
<ul style="list-style-type: none"> <li>/ High-performance tire</li> <li>/ Fully-suspended seat</li> <li>/ Vehicle toolkit</li> </ul>	<ul style="list-style-type: none"> <li>/ Wet braking drive axle</li> <li>/ Fully-suspended gearbox</li> <li>/ Oil filter</li> <li>/ Oil cooler</li> <li>/ Four-piece rim</li> <li>/ Electro-hydraulic steering</li> <li>/ Gearbox dipstick</li> </ul>	<ul style="list-style-type: none"> <li>/ Open cast steering axle</li> <li>/ Pad-equipped steering axle</li> <li>/ Fully hydraulic power steering gear</li> <li>/ Small-diameter steering wheel</li> <li>/ Steering wheel adjusting device</li> </ul>	<ul style="list-style-type: none"> <li>/ EU V engine</li> <li>/ Plate-fin heat dissipater</li> <li>/ Auxiliary water tank for heat dissipater</li> <li>/ High-efficiency air filter</li> <li>/ Safety filter cartridge</li> <li>/ High-efficiency air intake silencer</li> <li>/ High-efficiency exhaust silencer</li> <li>/ High-position air intake device</li> <li>/ Low-position exhauster</li> <li>/ Fan protection device</li> <li>/ Engine operation safety protection</li> <li>/ DPF system</li> </ul>	<ul style="list-style-type: none"> <li>/ Special sound-absorbing cotton</li> <li>/ Traction device</li> <li>/ Engine hood gas spring</li> <li>/ Anti-skid boarding step</li> <li>/ Large rubber pedal pad</li> <li>/ Counterweight grille cover</li> <li>/ Lockable hood</li> <li>/ Double-layer soundproof hood padding</li> <li>/ Water tank lid bolt with retaining ring</li> <li>/ Piston rod sleeve</li> <li>/ Traction pin locking pin</li> </ul>

Control	Hydraulic	Electrical	Portal	Overhead Guard
<ul style="list-style-type: none"> <li>/ Cable-type stop brake (with safety lock)</li> <li>/ Hanging control pedal</li> </ul>	<ul style="list-style-type: none"> <li>/ Low-noise gear pump</li> <li>/ Load-sensing steering-priority-ensured multiway valve</li> <li>/ 24° conic joint</li> <li>/ High-pressure hydraulic system</li> <li>/ Hydraulic oil recycling filter cartridge</li> <li>/ Self-locking valve in the tilting fuel circuit</li> <li>/ Hydraulic dipstick</li> <li>/ Double valve</li> <li>/ Hydraulic oil suction filter cartridge</li> </ul>	<ul style="list-style-type: none"> <li>/ Multifunctional interactive instruments</li> <li>/ Chair sensing system</li> <li>/ Combination LED lighting system</li> <li>/ Intelligent controller</li> <li>/ Gear shifting switch formed by in-mold injection</li> <li>/ Waterproof connector</li> <li>/ Electric horn</li> <li>/ Reverse buzzer</li> <li>/ Integrated combination switch</li> <li>/ Neutral gear safety switch</li> <li>/ Engine oil pressure alarm</li> <li>/ Gearbox oil temperature alarm</li> <li>/ Engine hour counter</li> <li>/ Oil gauge</li> <li>/ Water temperature meter</li> <li>/ Preheating indicator</li> <li>/ Charge indicator</li> <li>/ Main power switch</li> <li>/ Electronic alarm light</li> </ul>	<ul style="list-style-type: none"> <li>/ Duplex wide-view large-lifting-capacity mast</li> <li>/ Standard fork</li> <li>/ Standard fork carriage</li> <li>/ Standard load backrest</li> <li>/ Speed limiting valve of the mast</li> <li>/ Load safety valve</li> <li>/ Mast descending buffering device</li> </ul>	<ul style="list-style-type: none"> <li>/ Fully-suspended overhead guard</li> <li>/ Boarding handle</li> <li>/ Right rear armrest with horn button</li> <li>/ PVC ceiling</li> <li>/ Wide-view rearview mirror</li> </ul>

## Options

Truck	Power	Hydraulic	Electrical	Portal
<ul style="list-style-type: none"> <li>/ New-generation fingertip operating system</li> <li>/ Combined cab</li> <li>/ Cab heater</li> <li>/ Windshield and wiper</li> <li>/ User specified color</li> <li>/ Solid tire</li> <li>/ Clean tire</li> <li>/ Swinging LPG cylinder stand</li> <li>/ Buckling LPG cylinder stand</li> <li>/ Fan</li> <li>/ License plate frame</li> <li>/ Labels in foreign languages</li> </ul>	<ul style="list-style-type: none"> <li>/ Water tank grille cover</li> <li>/ Basin-shaped double air filter</li> <li>/ High-position exhauster</li> <li>/ High-position exhaust fire protection device</li> </ul>	<ul style="list-style-type: none"> <li>/ Hydraulic oil heat dissipater</li> <li>/ Electric proportional control valve</li> <li>/ Triple valve</li> <li>/ Quadruple valve</li> <li>/ Quintuple valve</li> </ul>	<ul style="list-style-type: none"> <li>/ Multi-segment adjustable speed limit</li> <li>/ Battery for start in cold weather</li> <li>/ Lifting at a high idle speed</li> <li>/ Oil-water separation alarm</li> <li>/ Acoustic and optical alarm light</li> <li>/ Start with a PIN code or by swiping a card</li> <li>/ Rear lamp</li> <li>/ Blue light</li> </ul>	<ul style="list-style-type: none"> <li>/ Free duplex wide-view mast</li> <li>/ Four-cylinder free triplex wide-view mast</li> <li>/ Free triplex wide-view mast</li> <li>/ Special fork</li> <li>/ Widened fork carriage</li> <li>/ Heightened load backrest</li> </ul>

Transmission	Steering	Body	Overhead Guard	Control
<ul style="list-style-type: none"> <li>/ Double front wheels</li> </ul>	<ul style="list-style-type: none"> <li>/ Synchronous steering</li> </ul>	<ul style="list-style-type: none"> <li>/ Rotating handle of water tank lid</li> <li>/ Fuel tank cap with lock</li> </ul>	<ul style="list-style-type: none"> <li>/ Heightened overhead guard</li> <li>/ Additional left and right rearview mirrors</li> <li>/ Fire extinguisher (1kg)</li> </ul>	<ul style="list-style-type: none"> <li>/ Pedal parking brake</li> </ul>

## Optional Attachments

<ul style="list-style-type: none"> <li>/ Paper roll clamp</li> <li>/ Rotatable roll clamp</li> <li>/ Load stabilizer</li> <li>/ Multi-purpose barrel clamp</li> <li>/ Soft package clamp</li> </ul>	<ul style="list-style-type: none"> <li>/ Oil barrel clamp</li> <li>/ Tipping clamp</li> <li>/ Boom</li> <li>/ Tie rod</li> <li>/ Side shift fork</li> </ul>	<ul style="list-style-type: none"> <li>/ Rotating fork</li> <li>/ Lengthened fork sleeve</li> <li>/ Load ejector</li> <li>/ Cardboard box clamp</li> <li>/ Push-puller</li> </ul>	<ul style="list-style-type: none"> <li>/ Bucket</li> <li>/ Hook</li> <li>/ Lengthened fork</li> <li>/ Weighing system</li> </ul>
---	---	---	--

## 2.0-2.5t XF2 series mast:(pneumatic)

Type	Model	Max. Fork Height	Overall height				Free lift		Front Overhang	Tilt range		Capacity			
			Lowered		Extended		Without backrest	With backrest		FWD	BWD	load capacity at 500mm			
					Without backrest	With backrest						Single tire		Dual tire	
			mm	mm	mm	mm	mm	mm		mm	(°)	(°)	kg	kg	kg
Wide view mast	X2B25M200	2000	1515	2642	3046	140	140	462.5	6	6	2000	2500	2000	2500	
	X2B25M250	2500	1765	3142	3546	140	140	462.5	6	11	2000	2500	2000	2500	
	X2B25M270	2700	1865	3342	3746	140	140	462.5	6	11	2000	2500	2000	2500	
	X2B25M300	3000	2015	3642	4046	140	140	462.5	6	11	2000	2500	2000	2500	
	X2B25M330	3300	2165	3942	4346	140	140	462.5	6	11	2000	2500	2000	2500	
	X2B25M350	3500	2265	4142	4546	140	140	462.5	6	11	2000	2500	2000	2500	
	X2B25M370	3700	2415	4342	4746	140	140	462.5	6	11	2000	2500	2000	2500	
	X2B25M400	4000	2615	4642	5046	140	140	462.5	6	11	2000	2500	2000	2500	
	X2B25M430	4300	2765	4942	5346	140	140	462.5	6	6	2000	2400	2000	2500	
	X2B25M450	4500	2865	5142	5546	140	140	462.5	6	6	1950	2300	1950	2450	
	X2B25M470	4700	2965	5342	5746	140	140	462.5	6	6	1900	2250	1900	2400	
	X2B25M500	5000	3115	5642	6046	140	140	462.5	6	6	1850	1900	1850	2400	
	X2B25M550	5500	3365	6142	6546	140	140	462.5	3	6	/	/	1800	2300	
	X2B25M600	6000	3615	6642	7046	140	140	462.5	3	6	/	/	1600	1750	
Wide view full free duplex mast	X2B25U200	2000	1515	2671	3056	854	469	462.5	6	6	2000	2500	2000	2500	
	X2B25U250	2500	1765	3171	3556	1104	719	462.5	6	11	2000	2500	2000	2500	
	X2B25U270	2700	1865	3371	3756	1204	819	462.5	6	11	2000	2500	2000	2500	
	X2B25U300	3000	2015	3671	4056	1354	969	462.5	6	11	2000	2500	2000	2500	
	X2B25U330	3300	2165	3971	4356	1504	1119	462.5	6	11	2000	2500	2000	2500	
	X2B25U350	3500	2265	4171	4556	1604	1219	462.5	6	11	2000	2500	2000	2500	
Wide view full free triplex mast	X2B25U370	3700	2415	4371	4756	1754	1369	462.5	6	11	2000	2500	2000	2500	
	X2B25U400	4000	2615	4671	5056	1954	1569	462.5	6	11	2000	2500	2000	2500	
	X2B25N400	4000	1930	4668	5046	1274	884	469.5	6	6	2000	2500	2000	2500	
	X2B25N430	4300	2030	4968	5346	1374	984	469.5	6	6	1950	2400	1950	2450	
	X2B25N450	4500	2080	5168	5546	1424	1034	469.5	6	6	1900	2300	1950	2450	
	X2B25N470	4700	2180	5368	5746	1524	1134	469.5	6	6	1850	2250	1900	2450	
	X2B25N500	5000	2280	5668	6046	1624	1234	469.5	3	6	1700	1900	1850	2400	
	X2B25N550	5500	2430	6168	6546	1774	1384	469.5	3	6	1450	1600	1800	2050	
	X2B25N600	6000	2630	6668	7046	1974	1584	469.5	3	6	1000	1050	1600	1750	
	X2B25N650	6500	2830	7168	7546	2174	1784	469.5	3	6	/	/	1550	1550	
X2B25N700	7000	3080	7668	8046	2424	2034	469.5	3	6	/	/	1200	1200		

With sideshifter minus 150kg,with integral sideshifter minus 100kg.

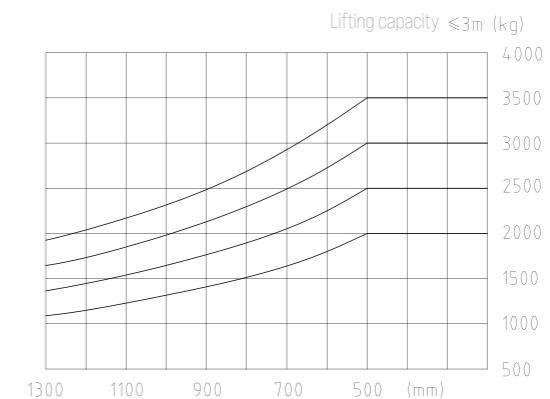
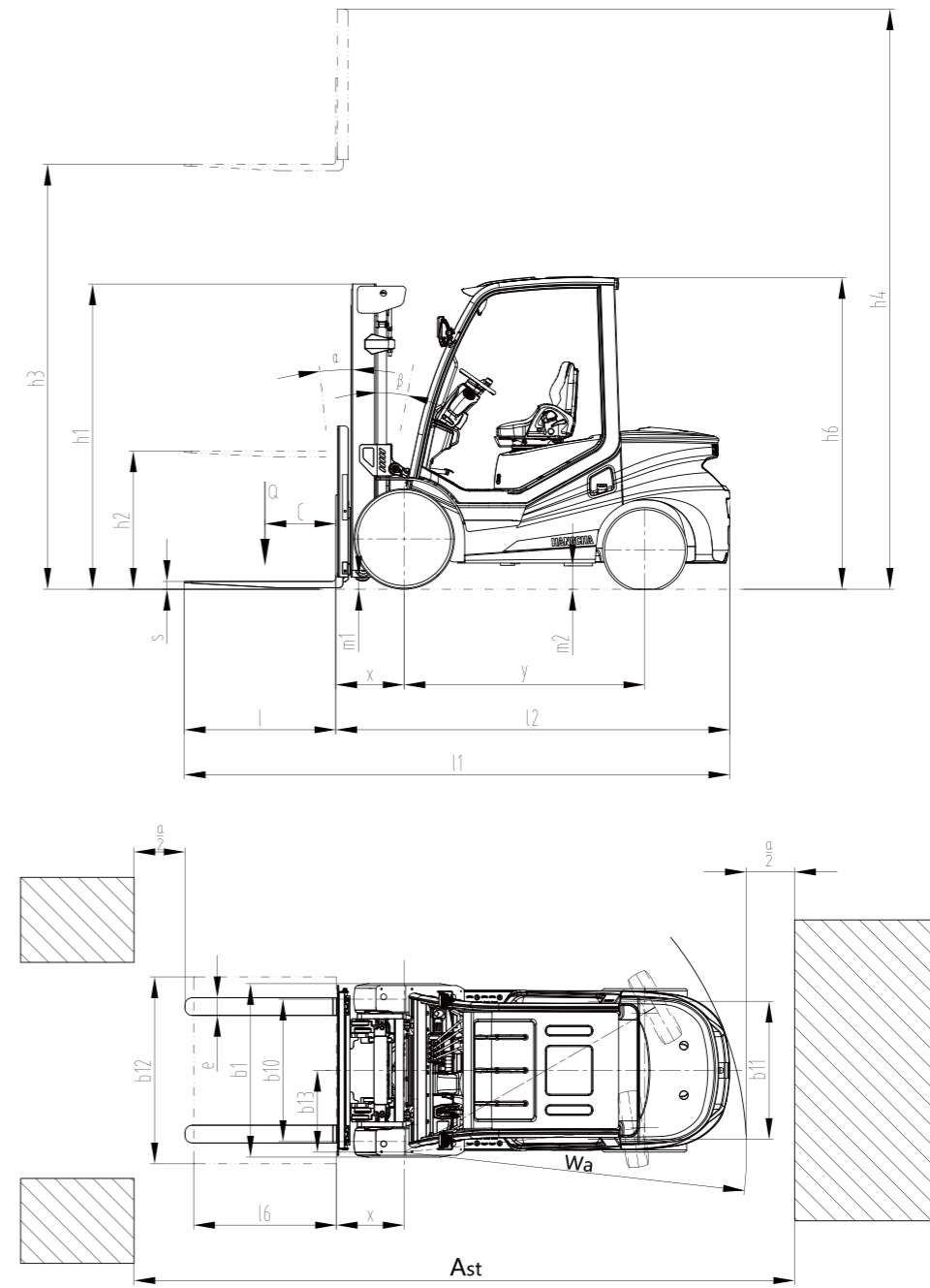
## 3.0-3.5t XF2 series mast:(pneumatic)

Type	Model	Max. Fork Height	Overall height						Free lift				Front Overhang	Tilt range		Capacity				
			Lowered (mm)		Extended		Without backrest (mm)	With backrest (mm)	Without backrest (mm)	With backrest (mm)	FWD	BWD		load capacity at 500mm						
					Without backrest (mm)	With backrest (mm)								Single tire(kg)		Dual tire(kg)				
			mm	3.0t	3.5t	3.0t	3.5t	3.0t	3.5t	3.0t	3.5t	(mm)		(°)	(°)	3.0t	3.5t	3.0t	3.5t	
Wide view mast	X2B30/35M200	2000	1540	1655	2702	2777	3145	3145	145	150	145	150	477.5	482.5	6	6	3000	3500	3000	3500
	X2B30/35M250	2500	1790	1905	3202	3277	3645	3645	145	150	145	150	477.5	482.5	6	11	3000	3500	3000	3500
	X2B30/35M270	2700	1890	2006	3402	3477	3845	3845	145	150	145	150	477.5	482.5	6	11	3000	3500	3000	3500
	X2B30/35M300	3000	2040	2155	3702	3777	4145	4145	145	150	145	150	477.5	482.5	6	11	3000	3500	3000	3500
	X2B30/35M330	3300	2190	2305	4002	4077	4445	4445	145	150	145	150	477.5	482.5	6	11	3000	3500	3000	3500
	X2B30/35M350	3500	2290	2405	4202	4277	4645	4645	145	150	145	150	477.5	482.5	6	11	3000	3500	3000	3500
	X2B30/35M370	3700	2440	2505	4402	4477	4845	4845	145	150	145	150	477.5	482.5	6	11	3000	3500	3000	3500
	X2B30/35M400	4000	2640	2755	4702	4777	5145	5145	145	150	145	150	477.5	482.5	6	11	3000	3500	3000	3500
	X2B30/35M430	4300	2790	2905	5002	5077	5445	5445	145	150	145	150	477.5	482.5	6	6	3000	3500	3000	3500
	X2B30/35M450	4500	2890	3005	5202	5277	5645	5645	145	150	145	150	477.5	482.5	6	6	3000	3500	3000	3500
	X2B30/35M470	4700	2990	3105	5402	5477	5845	5845	145	150	145	150	477.5	482.5	6	6	2850	3500	3000	3500
	X2B30/35M500	5000	3140	3255	5702	5777	6145	6145	145	150	145	150	477.5	482.5	6	6	2700	3400	3000	3400
	X2B30/35M550	5500	3390	3505	6202	6277	6645	6645	145	150	145	150	477.5	482.5	3	6	/	/	2550	2950
	X2B30/35M600	6000	3640	3755	6702	6777	7145	7145	145	150	145	150	477.5	482.5	3	6	/	/	2200	2400
Wide view full free duplex mast	X2B30/35U200	2000	1540	1655	2726	2826	3145	3155	814	839	395	510	477.5	482.5	6	6	3000	3500	3000	3500
	X2B30/35U250	2500	1790	1905	3226	3326	3645	3655	1064	1089	645	760	477.5	482.5	6	11	3000	3500	3000	3500
	X2B30/35U270	2700	1890	2006	3426	3526	3845	3855	1164	1189	745	860	477.5	482.5	6	11	3000	3500	3000	3500
	X2B30/35U300	3000	2040	2155	3726	3826	4145	4155	1314	1339	845	1010	477.5	482.5	6	11	3000	3500	3000	3500
	X2B30/35U330	3300	2190	2305	4026	4126	4445	4455	1464	1489	1045	1160	477.5	482.5	6	11	3000	3500	3000	3500
	X2B30/35U350	3500	2290	2405	4226	4326	4645	4655	1564	1589	1145	1260	477.5	482.5	6	11	3000	3500	3000	3500
Wide view full free triplex mast	X2B30/35U370	3700	2440	2505	4426	4526	4845	4855	1714	1689	1295	1360	477.5	482.5	6	11	3000	3500	3000	3500
	X2B30/35U400	4000	2640	2755	4726															

# XF2 series 2.0-3.5t forklift specification

		HANGCHA GROUP CO.,LTD.					
Distinguishing mark	1.1	Manufacturer					
	1.2	Manufacturer's type designation	CPCD20-X2H7F1	CPCD25-X2H7F1	CPCD30-X2H7F1	CPCD35-X2H7F1	
	1.3	Drive: electric (battery or mains), diesel, petrol, fuel gas	Diesel	Diesel	Diesel	Diesel	
	1.5	Rated capacity/rated load	Q (kg)	2000	2500	3000	3500
	1.6	Load centre distance	c (mm)	500	500	500	500
	1.8	Load distance, centre of drive axle to fork	x (mm)	462.5	462.5	477.5	482.5
		Rear overhang	mm	405	480	535	600
Weight	1.9	Wheelbase	y (mm)	1650	1650	1700	1700
	2.1	Service Weight	kg	3455	3815	4400	4755
	2.2	Axle loading, laden front/rear	kg	4801/654	5543/772	6345/1055	7155/1100
Tyres, chassis	2.3	Axle loading, unladen front/rear	kg	1635/1820	1585/2230	1620/2780	1620/3135
	3.2	Tyre size, front		7.00-12-12PR/2	7.00-12-12PR/2	28×9-15-12PR/2	28×9-15-12PR/2
	3.3	Tyre size, rear		6.00-9-10PR/2	6.00-9-10PR/2	6.50-10-10PR/2	6.50-10-10PR/2
	3.6	Tread, front	b <sub>0</sub> (mm)	965	965	1005	1005
	3.7	Tread, rear	b <sub>n</sub> (mm)	973	973	975	975
	Dimensions	4.1	Tilt of mast/fork carriage forward/backward	α/β(°)	6/11	6/11	6/11
4.2		Height, mast lowered	h <sub>1</sub> (mm)	2015	2015	2040	2155
4.3		Free lift	h <sub>2</sub> (mm)	140	140	145	150
4.4		Lift	h <sub>3</sub> (mm)	3000	3000	3000	3000
4.5		Height, mast extended	h <sub>4</sub> (mm)	4046	4046	4145	4145
4.7		Height of overhead guard (cabin)	h <sub>e</sub> (mm)	2165	2165	2180	2180
4.20		Length to face of forks	l <sub>2</sub> (mm)	2517.5	2592.5	2712.5	2782.5
4.21		Overall width	b (mm)	1155	1155	1225	1225
4.22		Fork dimensions	s/e/l (mm)	1070×122×40	1070×122×40	1070×122×45	1070×122×50
4.31		Ground clearance, laden, below mast	m <sub>1</sub> (mm)	115	115	130	130
4.32		Ground clearance, centre of wheelbase	m <sub>2</sub> (mm)	150	150	165	165
4.33		Aisle width for pallets 1000 x 1200 crossways	A <sub>1</sub> (mm)	3822.5	3430	4027.5	4097.5
4.34		Aisle width for pallets 800 x 1200 lengthways	A <sub>2</sub> (mm)	4022.5	3630	4227.5	4297.5
4.35	Turning radius	W <sub>s</sub> (mm)	2160	2230	2350	2415	
Performance data	5.1	Travel speed, laden/unladen	km/h	19.5/20	19.5/20	19/19.5	19/19.5
	5.2	Lift speed, laden/unladen	m/s	0.62/0.66	0.62/0.66	0.58/0.62	0.46/0.5
	5.3	Lowering speed, laden/unladen	m/s	0.5/0.45	0.5/0.45	0.5/0.45	0.5/0.45
	5.5	Drawbar pull, laden/unladen	N	23000/	23000/	24500/	24500/
	5.7	Gradeability, laden/unladen*	%	36	32	28	22
Combustion-engine	7.1	Engine manufacturer/type		XINCHAI 3E22YG51-001	XINCHAI 3E22YG51-001	XINCHAI 3E22YG51-001	XINCHAI 3E22YG51-001
		Emission STD		EU StageV	EU StageV	EU StageV	EU StageV
	7.2	Engine power according to DIN ISO 1585	kw	44.8	44.8	44.8	44.8
	7.3	Rated speed	min	2400	2400	2400	2400
	7.4	Number of cylinders/displacement	(-)/(cm <sup>3</sup> )	3/2227	3/2227	3/2227	3/2227
	7.10	Battery voltage/nominal capacity	V/Ah	12/90	12/90	12/90	12/90
		Rated torque	N·m/r/min	210/1600-1800	210/1600-1800	210/1600-1800	210/1600-1800
		Bore × stroke	mm	94×107	94×107	94×107	94×107
		Transmissions Manufacturer		CHINA	CHINA	CHINA	CHINA
		Transmissions Type		Power shift	Power shift	Power shift	Power shift
Addition data	10.1	Operating pressure for attachments	bar	160	160	160	160
	10.4	Fuel tank capacity	liter	58	58	60	60

Note: \*With suspension seat or cabin  
\*As a calculated value



2.0-3.5t Load center distance (mm)